

**OPEN 7 DAYS
A WEEK**

Harpers & Co

**Tel: 01322 524425
www.harpersandco.com**



Teal House, 5 High Street, Bexley, Kent, DA5 1BF

£1,200 PCM

Harpers & Co are delighted to offer this fully furnished luxurious one bedroom apartment in the newly built Teal House complex in the heart of Bexley Village.

Providing ample storage and the facilities of Bexley Village on its doorstep this apartment would suit those with a busy life in the city wanting to come home to beautiful and peaceful surround.

Direct trains from Bexley Station to London Bridge 23 mins.

- *1 BEDROOM FLAT* *LOCATED IN THE HEART OFF BEXLEY VILLAGE***
- *CLOSE PROXIMITY TO ALL LOCAL AMENITIES* *CLOSE TO BEXLEY MAINLINE TRAIN STATION***
- *OPEN PLAN KITCHEN/DINING ROOM* *EXCELLENT TRANSPORT LINKS***

EPC rating 83 (B)

VIEWING HIGHLY RECOMMENDED

Harpers & Co are delighted to offer this fully furnished luxurious one bedroom apartment in the newly built Teal House complex in the heart of Bexley Village.

Providing ample storage and the facilities of Bexley Village on its doorstep this apartment would suit those with a busy life in the city wanting to come home to beautiful and peaceful surround.

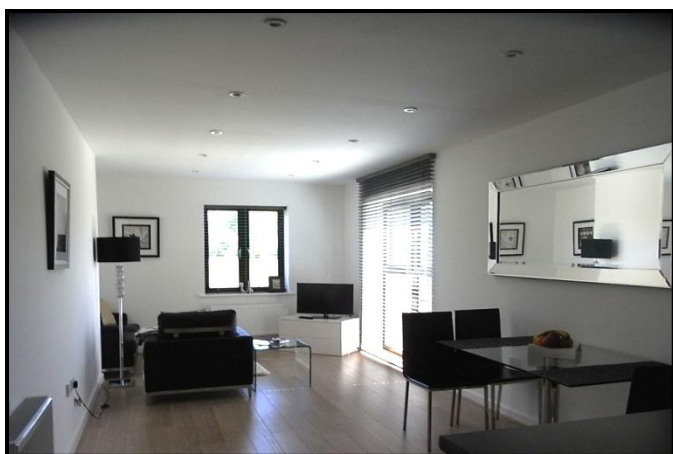
- Communal Entrance:** Fully carpeted throughout
- Entrance Hall:** Door to front, video intercom system, high quality wood flooring, storage cupboard housing boiler, storage cupboard with washing machine/dryer (Zanussi untested).
- Open Plan Lounge Area:** 29.5 X 9.84 2 UPVC double glazed windows to front and side, spotlights, wooden flooring, 1 radiator.
- Kitchen Area:** 8.2 X 9.84 White gloss fitted wall and base units with complementary work surfaces over, fully tiled flooring, built in Zanussi electric oven, hob and extractor, integrated Zanussi fridge/freezer, stainless steel sink unit, microwave, tiled flooring, spotlights.
- Bedroom 1:** 16.4 X 8.2 2 UPVC double glazed windows to front and side, fitted mirrored wardrobe carpeting throughout, 1 radiator.
- Shower Room:** Low level wc, wash hand basin, shower cubicle, heated towel rail, tiled flooring.
- Parking:** Allocated parking space behind remote electric security gate.
- Communal gardens:** The apartment enjoys good views of green fields and has access to the communal gardens.

Nearest stations

Bexley (0.1 mi)

Albany Park (1.1 mi)

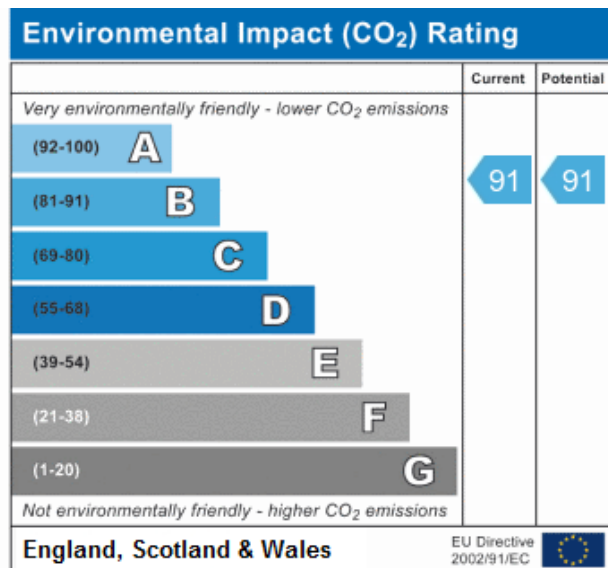
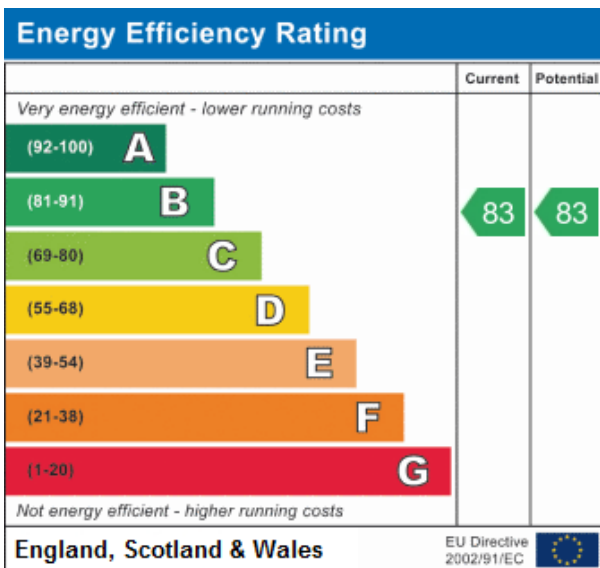
Crayford (1.3 mi)





THE PROPERTY MISDESCRIPTIONS ACT 1991

The Agent has not tested any apparatus, equipment, fixtures and fittings or services and so cannot verify that they are in working order or fit for the purpose. A Buyer is advised to obtain verification from their Solicitor or Surveyor.
References to the Tenure of a Property are based on information supplied by the Seller. The Agent has not had sight of the title documents. A Buyer is advised to obtain verification from their Solicitor.



Reference:
Teal House. Bexlev. Kent

Estate Agents Commercial Agents Lettings Chartered Surveyors Valuers Insurance

Open 7 days a week
Harpers House, 8 Bexley High Street, Bexley, DA5 1AD
Tel: 01322 524425 Fax: 01322 559500
www.harpersandco.com info@harpersandco.com